

# HAVEN

**500** EAVE-SIDE  
ENTRANCE

## ABOUT THE HAVEN SERIES

Traditional cottage style designed for a cozy backyard retreat. Featuring vaulted ceiling, open versatile floor plan and beautiful pitched roof. The Haven (Eave-Side Entrance) is offered in 500 sq. ft. and 700 sq.ft.



**One  
Bedroom  
Living Space**

### BUILDING FEATURES

Spacious living area, kitchen, 1 bedroom,  
1 bathroom & laundry space.

Beautiful LVP flooring throughout the home.

Large Windows to enhance natural light.

Vaulted ceilings in living space.



STARTING AT **\$150,000**

BASE PRICE FOR STRUCTURE,  
EXCAVATION & FOUNDATION.

Utility connections priced after  
site evaluation.

CONTACT US



801-560-4069



elevateadu@gmail.com

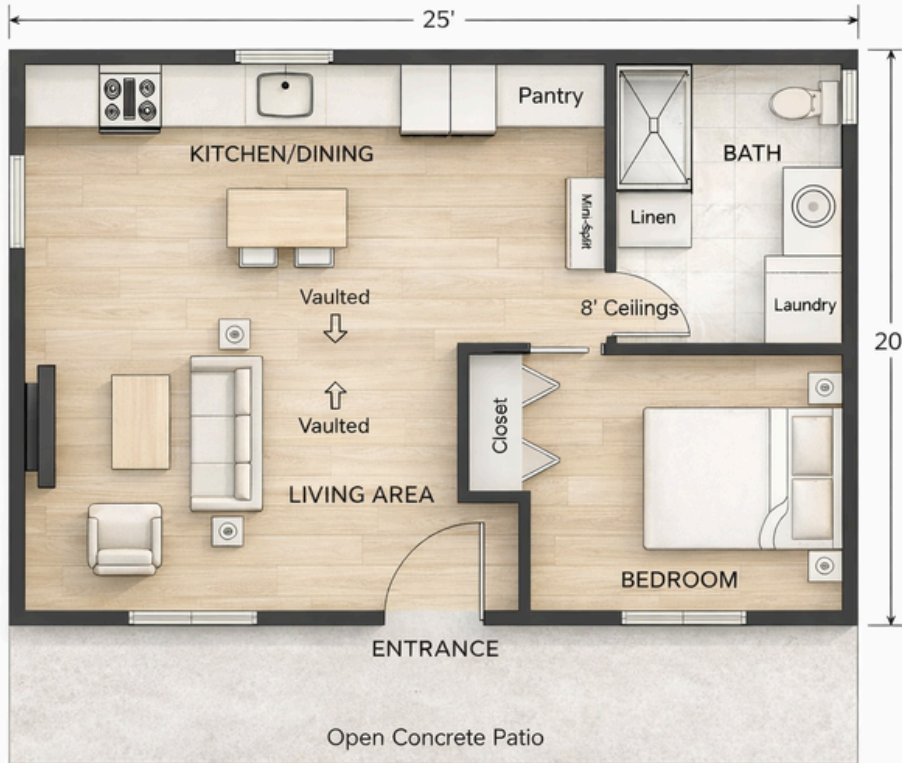


# HAVEN

EAVE-SIDE  
ENTRANCE

## 500

### FLOOR PLAN



Haven 500 – Eave Side Entry · 25' x 20'

### Advantages to Building with Elevate:

#### Custom On-Site Building (no kits)

Built with premium materials and expert construction to ensure durability and longevity

#### Cost Effective

A fraction of the cost of a home addition without the major disruption.

#### Maximize Property Potential

A functional, high-quality structure can boost your home's appeal

#### Private & Seperate

Keep work, kids, or guests close but not too close!